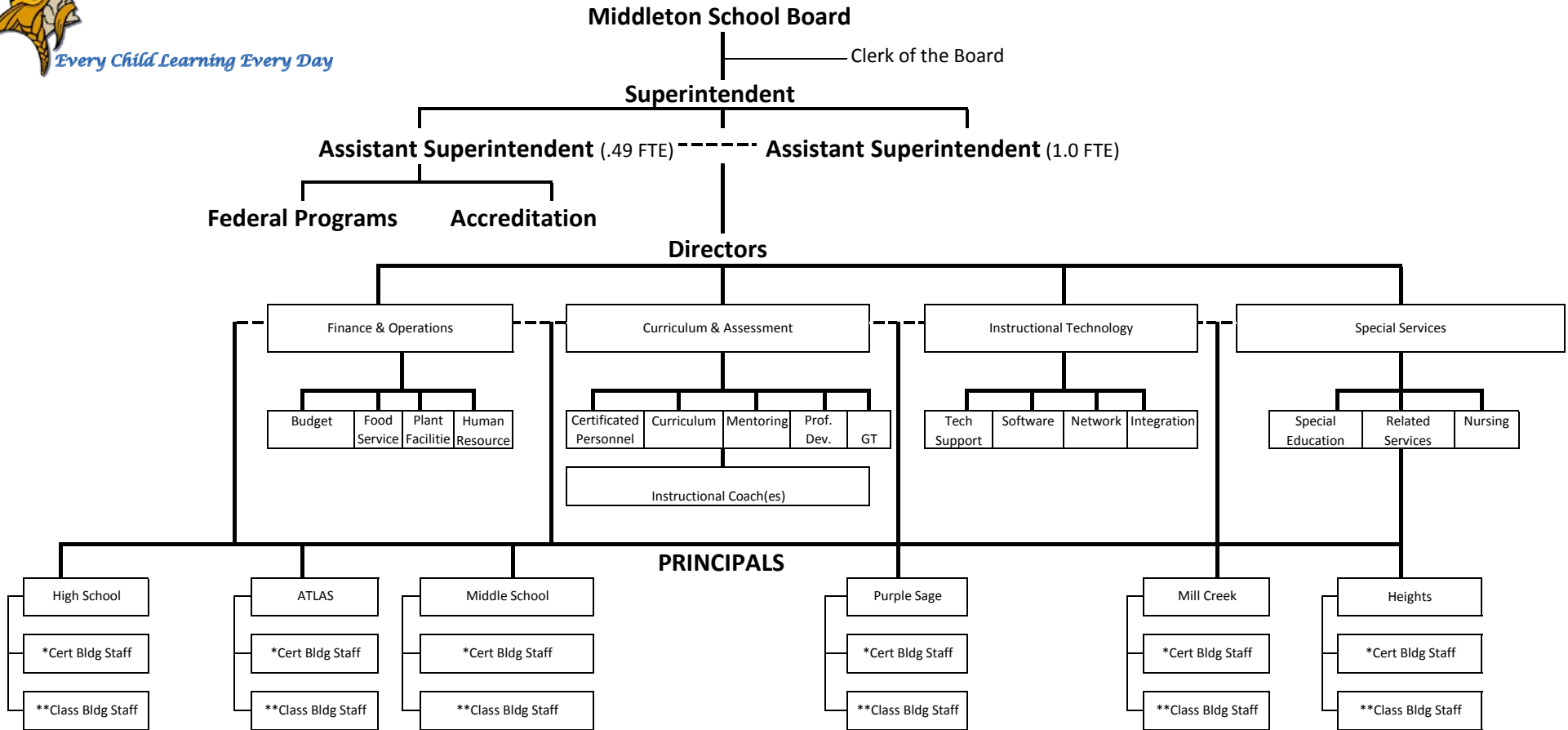


**MIDDLETON SCHOOL DISTRICT #134
POLICY AND PROCEDURE MANUAL
SECTION 6000 - Administration**

2013-14 Organizational Flow Chart.....

.....PROCEDURE 6000-P1



* Assistant Principal, Athletic Directors, Teachers, Counselors, School Nurse, Itinerant Staff
 ** Secretaries (Attend. Clerk, Counselor Clerk, Etc.), Paraprofessionals (EAs), Custodial, Food Service, Coaches

ADOPTED REVISIONS: 04-08-2013
 REVISED: 2/13/2017